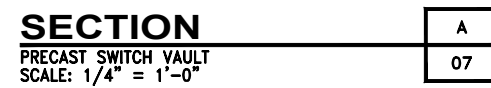



1. ADJUST KNOCK OUT SIZE AND LOCATIONS FOR DUCTBANK IN FINAL DESIGN.
2. TERM-A-DUCTS RECOMMENDED FOR CONDUITS IDENTIFIED AT INSTALLATION OF MH.



R E V I S I O N S			
NO.	DATE	BY	DESCRIPTION
1	03/01/2019	KDM	2019 F&I STANDARD DETAILS
2	03/01/2020	KDM	2020 F&I STANDARD DETAILS

PROJECT MANAGER: —	 <p>SEA-TAC INTERNATIONAL AIRPORT</p> <p>PROJECT: F&I STANDARD DETAILS</p> <p>SHEET TITLE: SWITCH VAULT SECTION</p>	WORK PROJECT NO.
PROJECT ENGINEER: —		CONSULTANT'S NO.
DESIGN ENGINEER: —		PORT OF SEATTLE NO.
DRAFTER: —		260543
SCALE: AS NOTED		08
DATE: —		
CHECKED/APPROVED BY: —		